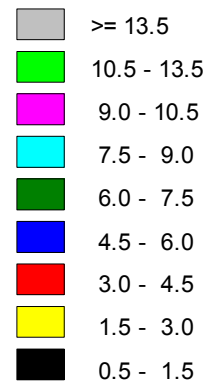


WIND SPEED  
(m/s)



Calms: 0.00%

5.6.3: 2005 Annual Windrose, Malaysia – TAPM Predicted Meteorological Data

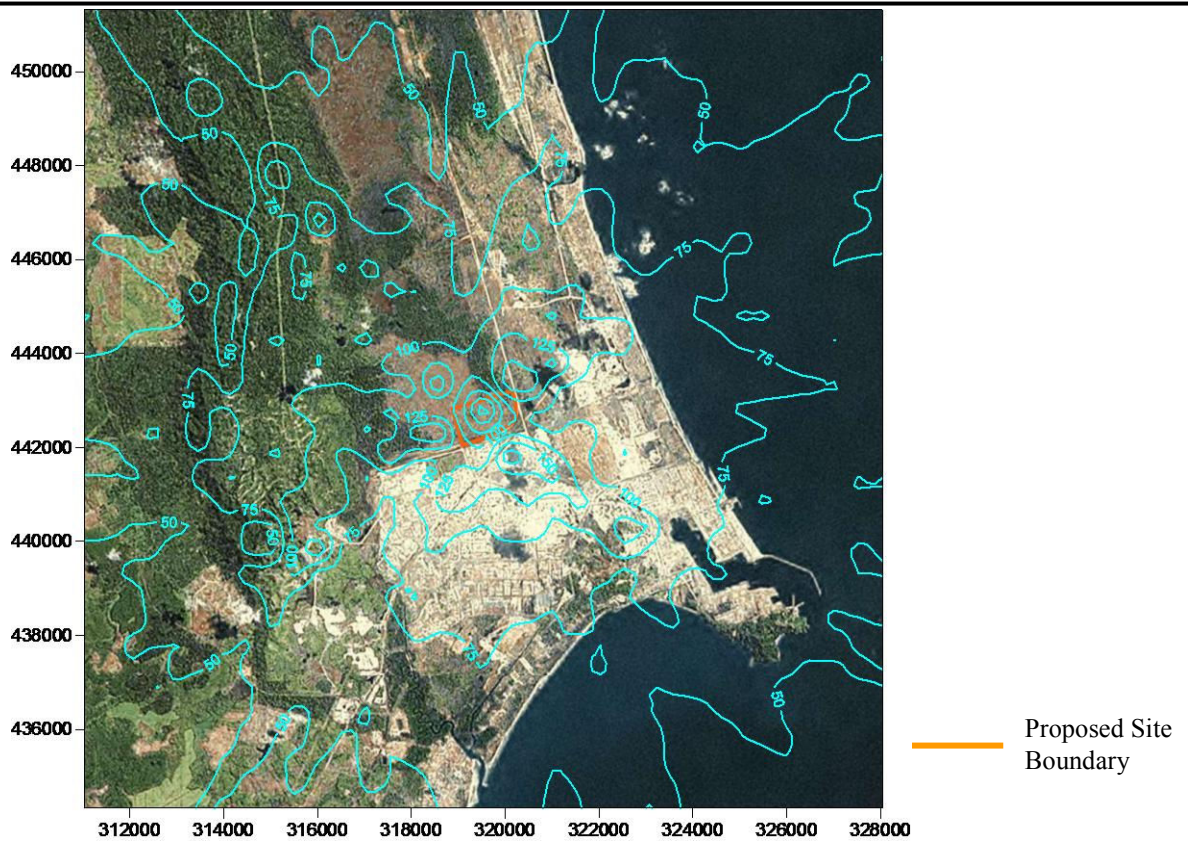


Figure 5.6.4: Maximum Predicted 1-hour SO<sub>2</sub> GLCs (µg/m<sup>3</sup>) - Normal Operations – 4 Kilns

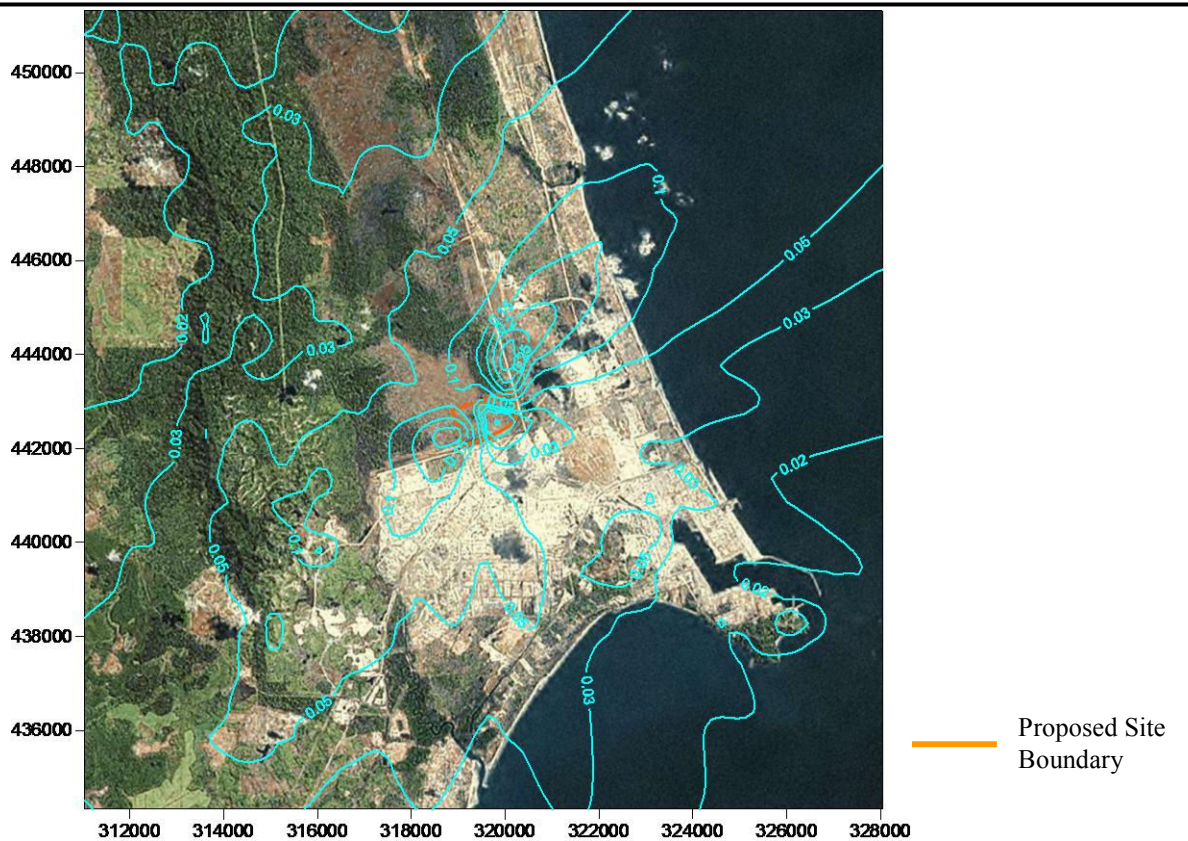


Figure 5.6.5: Maximum Predicted Annual HF GLCs (µg/m<sup>3</sup>) - Normal Operations – 4 Kilns

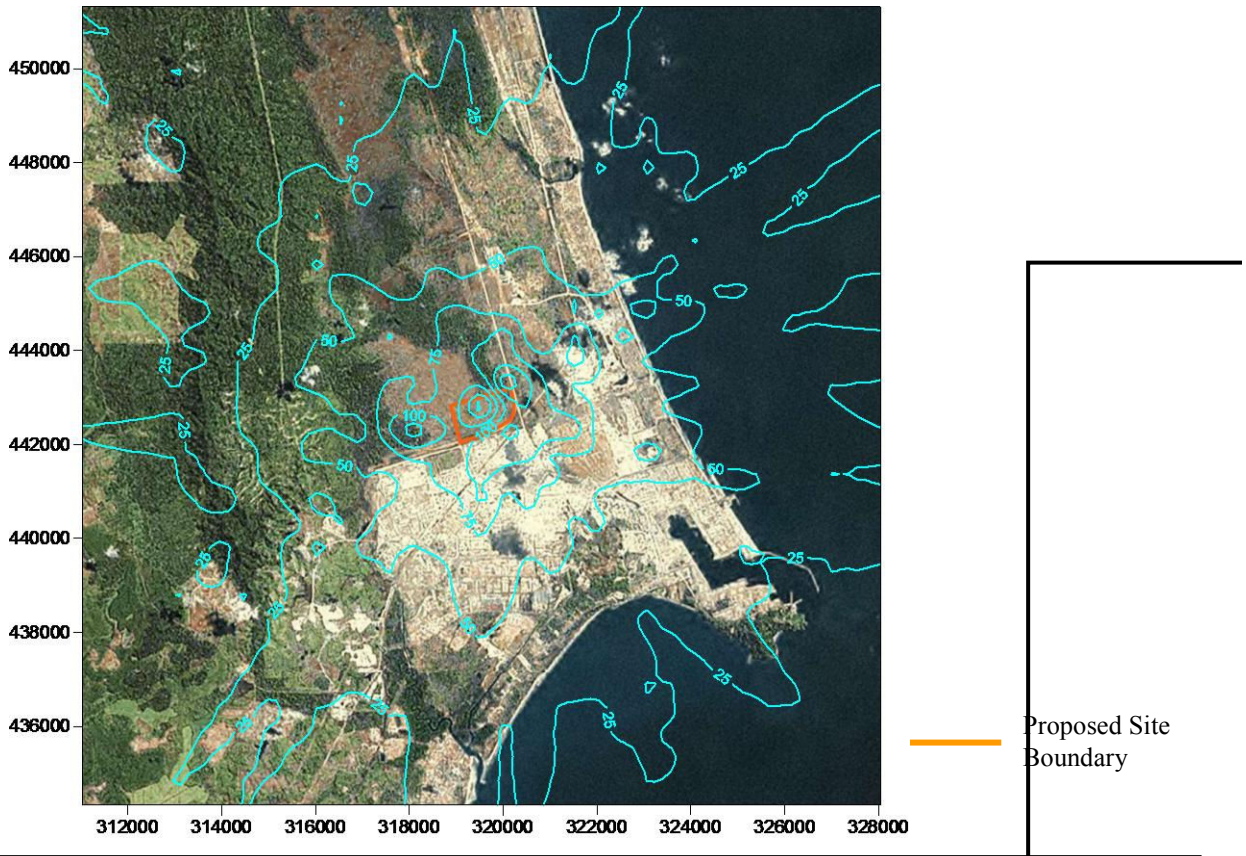


Exhibit 5.6.6: Maximum Predicted 1-hour SO<sub>2</sub> GLCs (µg/m<sup>3</sup>) - Emergency Operations – 2 Scrubbers

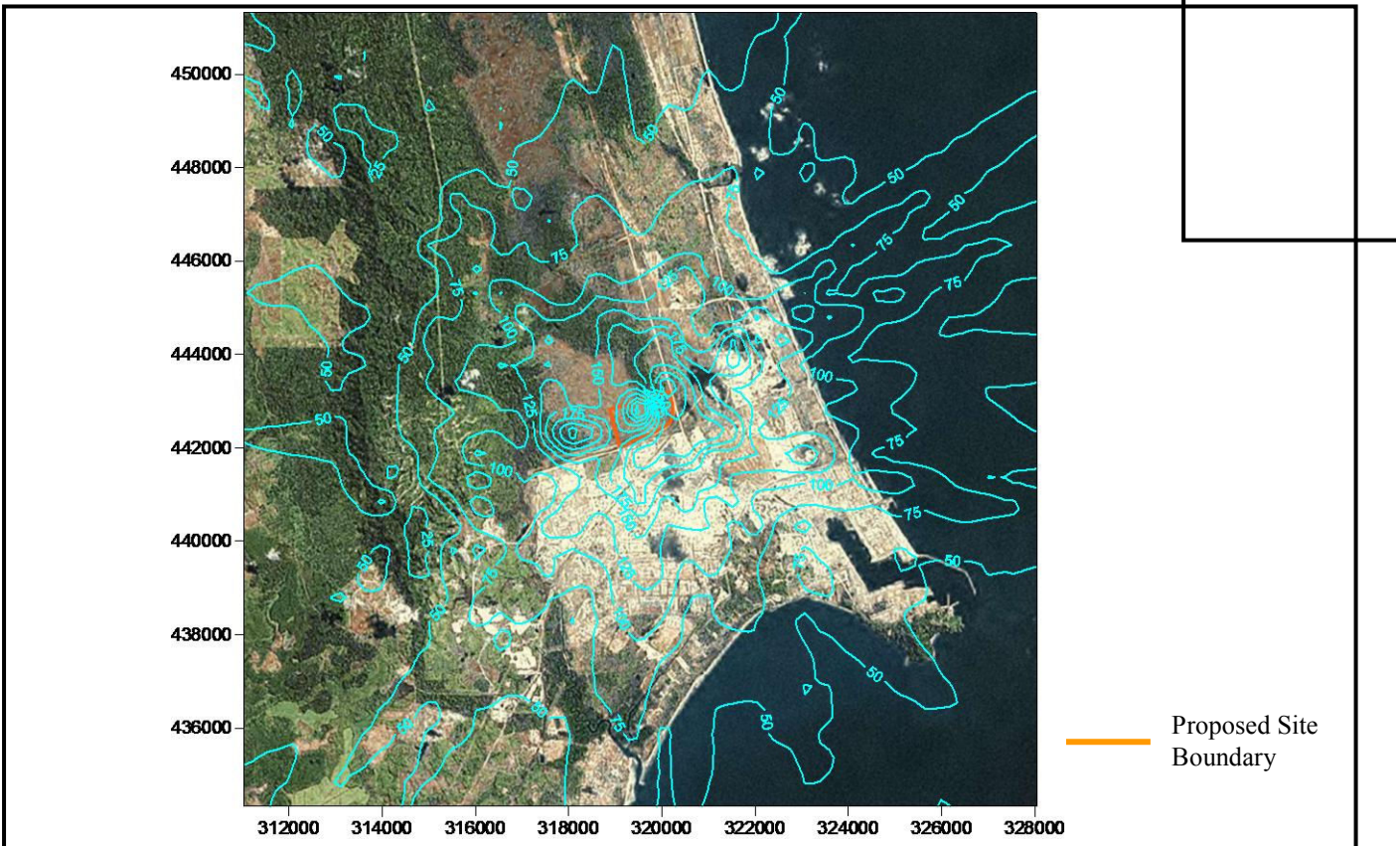


Exhibit 5.6.7: Maximum Predicted 1-hour SO<sub>2</sub> GLCs (µg/m<sup>3</sup>) - Emergency Operations – 4 Scrubbers



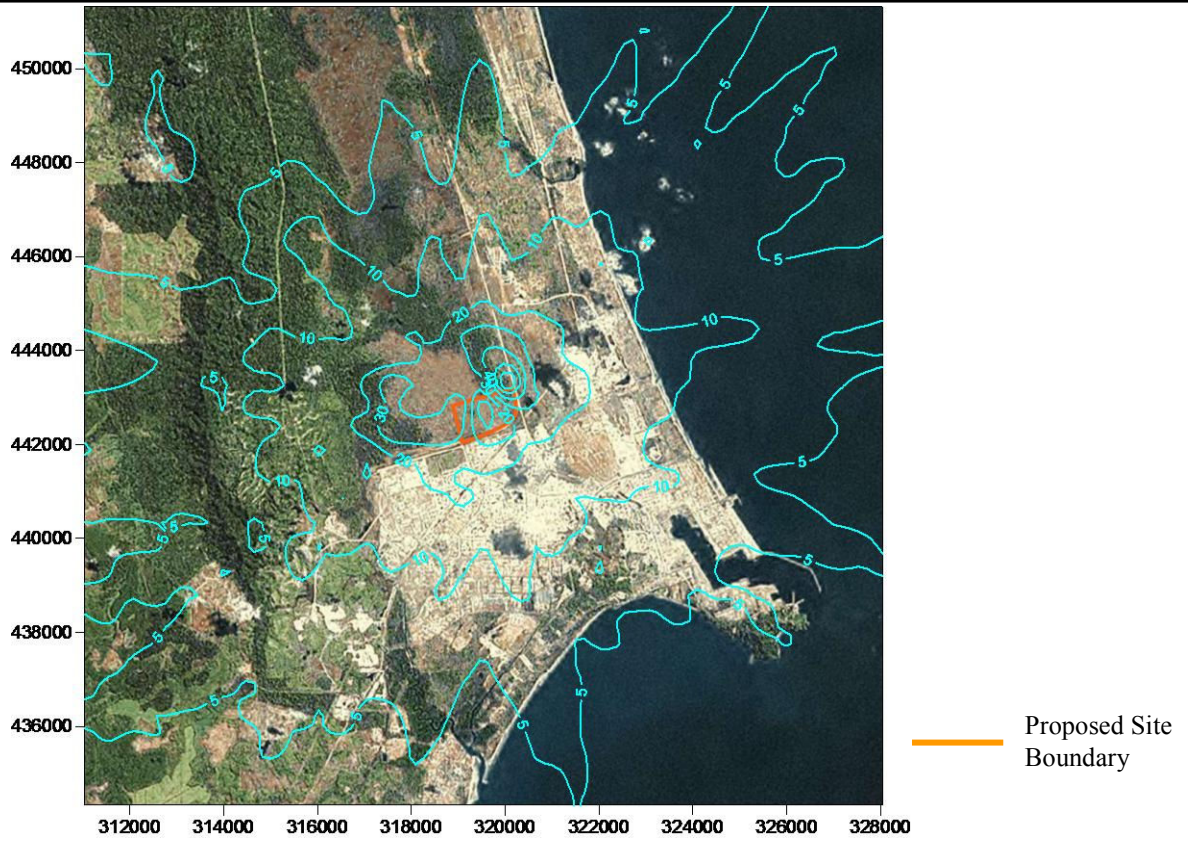


Exhibit 5.6.8: Maximum Predicted 24-hour SO<sub>2</sub> GLCs (µg/m<sup>3</sup>) - Emergency Operations – 4 Scrubbers

**Lynas**  
MALAYSIA SDN. BHD.

ENVIRON

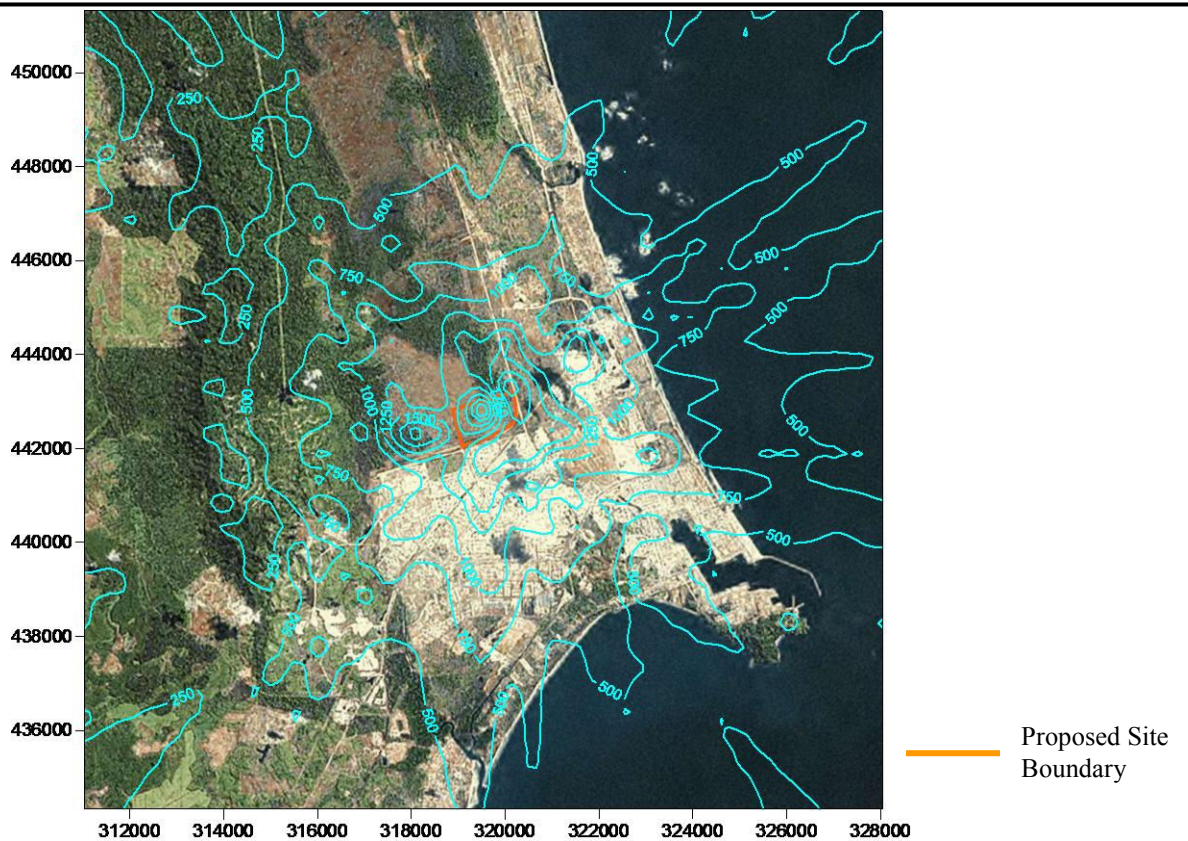


Exhibit 5.6.9: Maximum Predicted 15-minute H<sub>2</sub>SO<sub>4</sub> GLCs (µg/m<sup>3</sup>) - Emergency Operations – 4 Scrubbers

**Lynas**  
MALAYSIA SDN. BHD.

ENVIRON

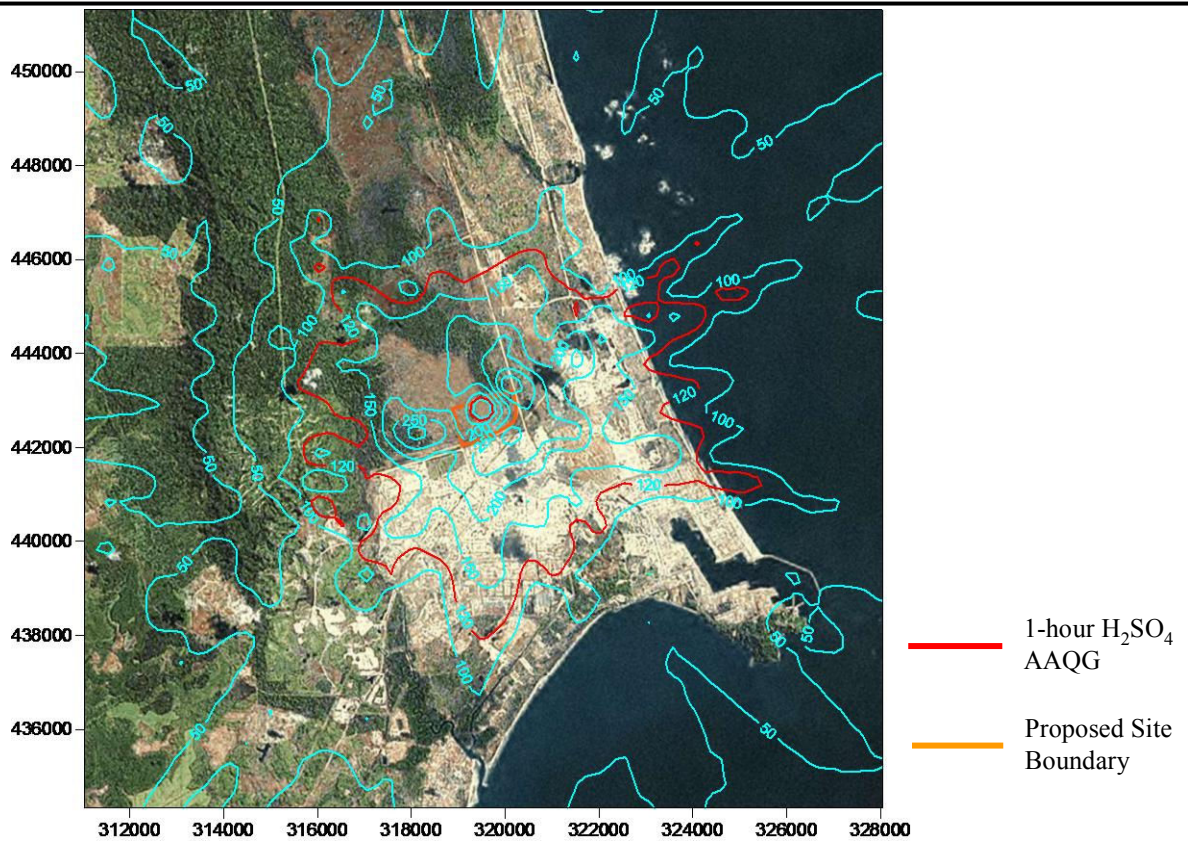


Exhibit 5.6.10: Maximum Predicted 1-hour H<sub>2</sub>SO<sub>4</sub> GLCs (µg/m<sup>3</sup>) - Emergency Operations – 1 Scrubber

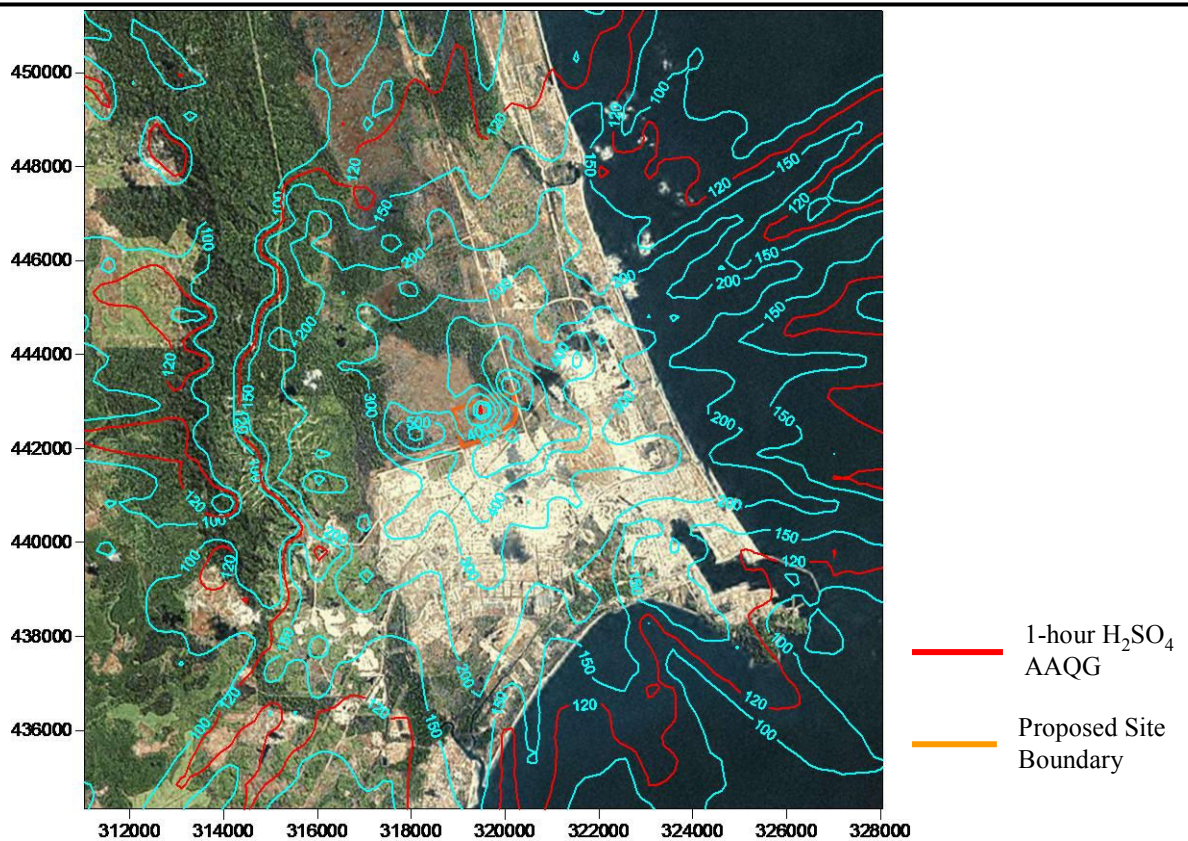


Exhibit 5.6.11: Maximum Predicted 1-hour H<sub>2</sub>SO<sub>4</sub> GLCs (µg/m<sup>3</sup>) - Emergency Operations – 2 Scrubbers

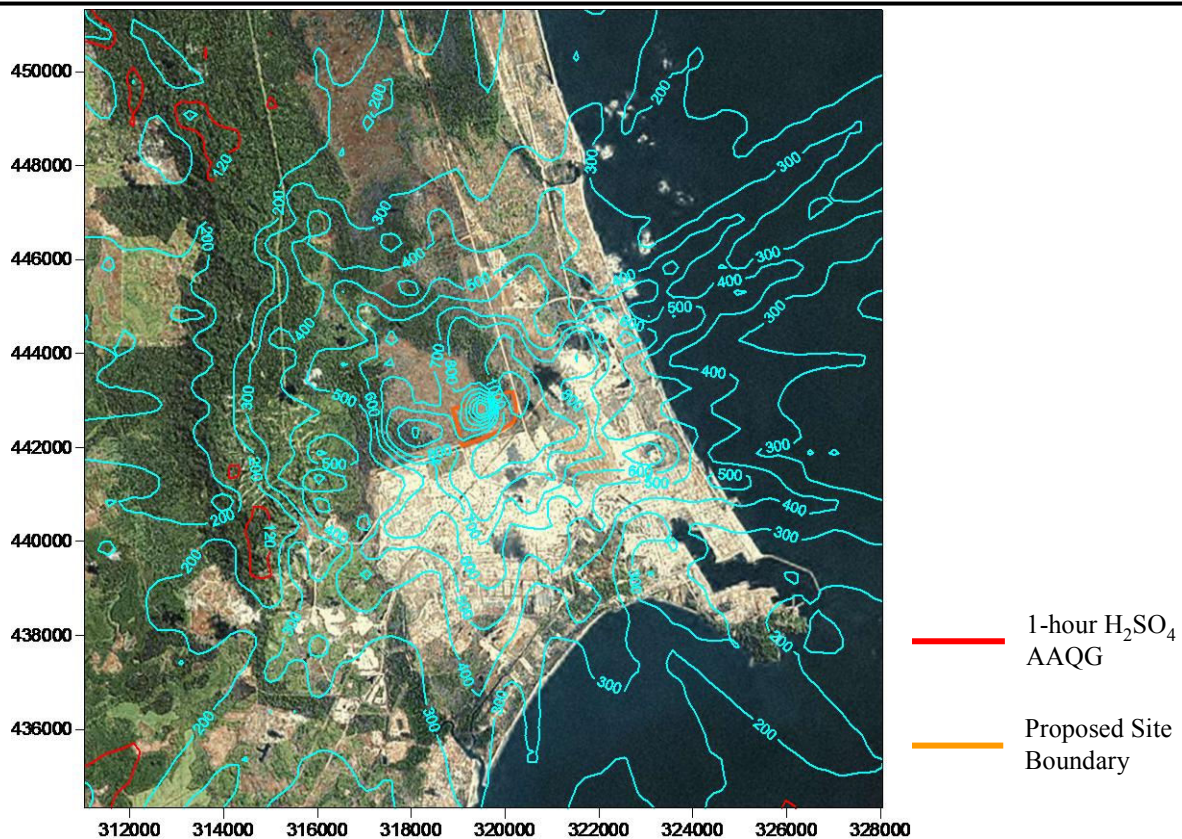


Exhibit 5.6.12: Maximum Predicted 1-hour H<sub>2</sub>SO<sub>4</sub> GLCs (µg/m<sup>3</sup>) - Emergency Operations – 4 Scrubbers

**Lynas**  
MALAYSIA SDN. BHD.

**ENVIRON**

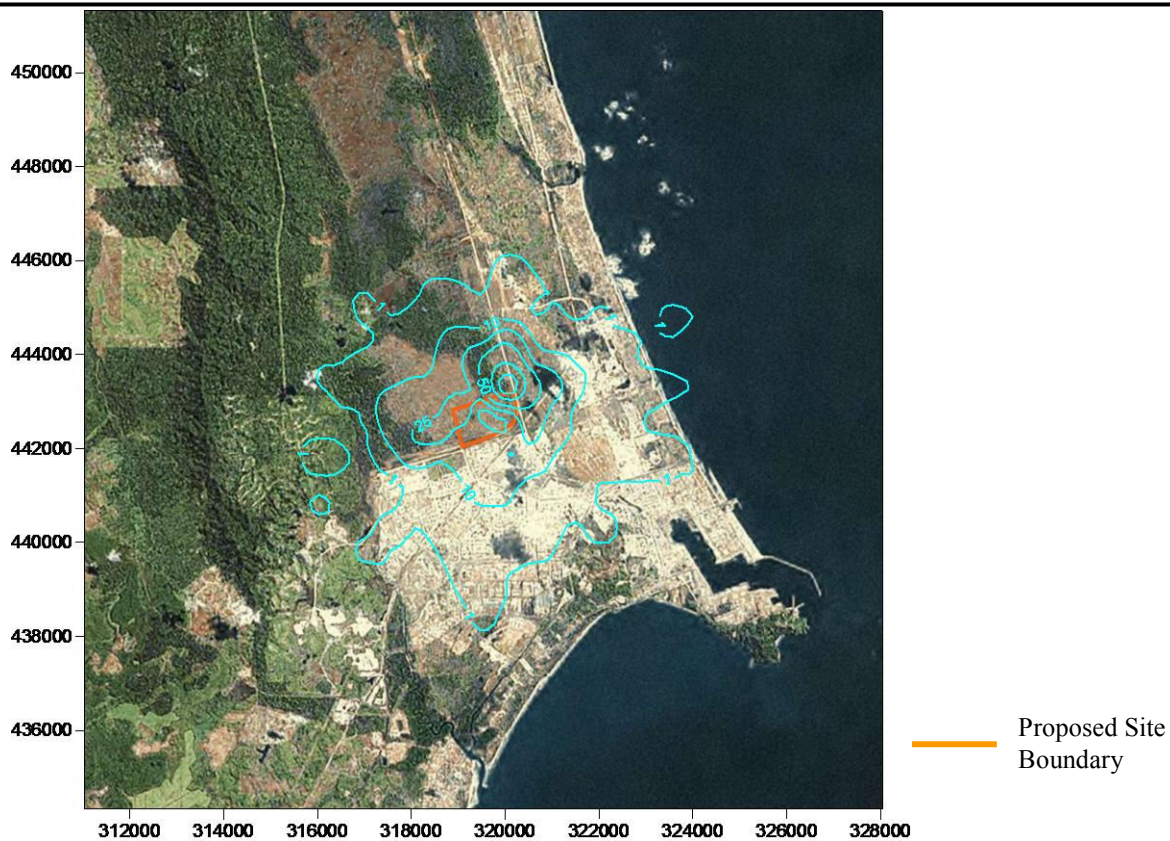


Exhibit 5.6.13: Frequency of 1-hour H<sub>2</sub>SO<sub>4</sub> AAQG Exceedence - Emergency Operations – 1 Scrubber

**Lynas**  
MALAYSIA SDN. BHD.

**ENVIRON**

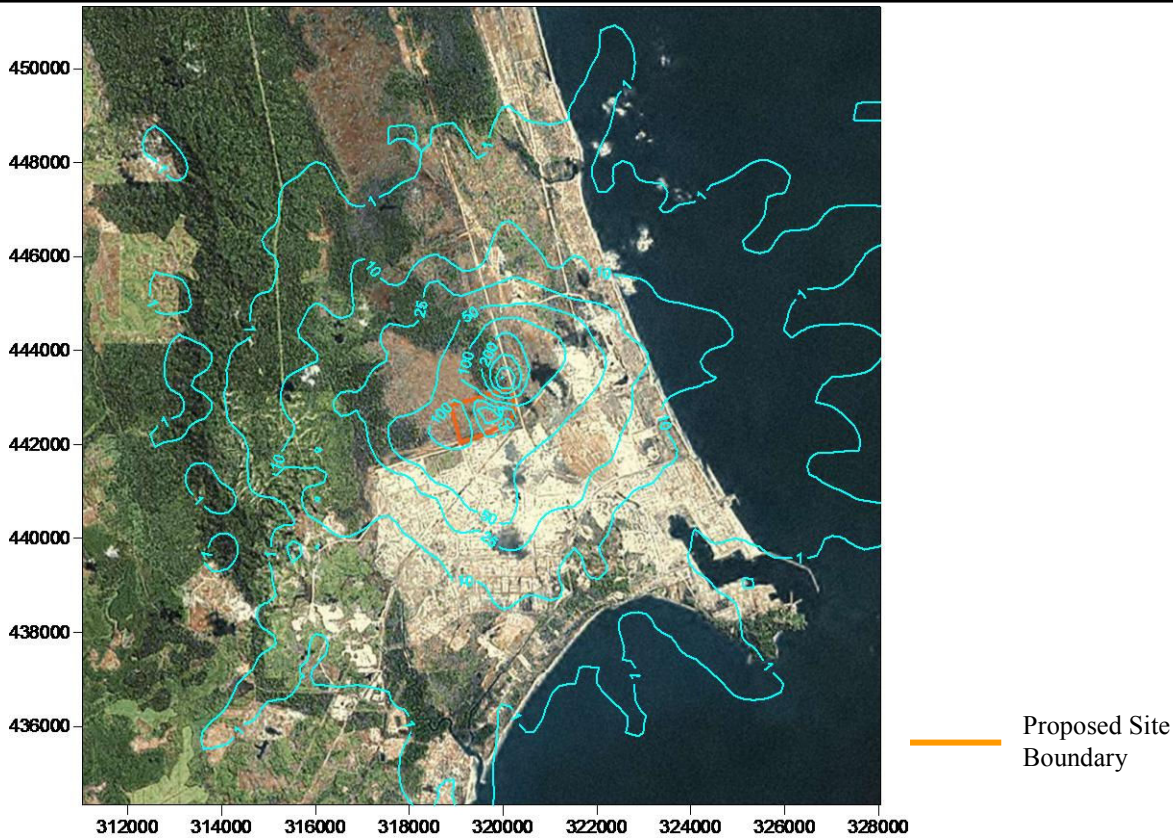


Exhibit 5.6.14: Frequency of 1-hour  $H_2SO_4$  Exceedence - Emergency Operations – 2 Scrubbers

**Lynas**  
MALAYSIA SDN. BHD.

ENVIRON

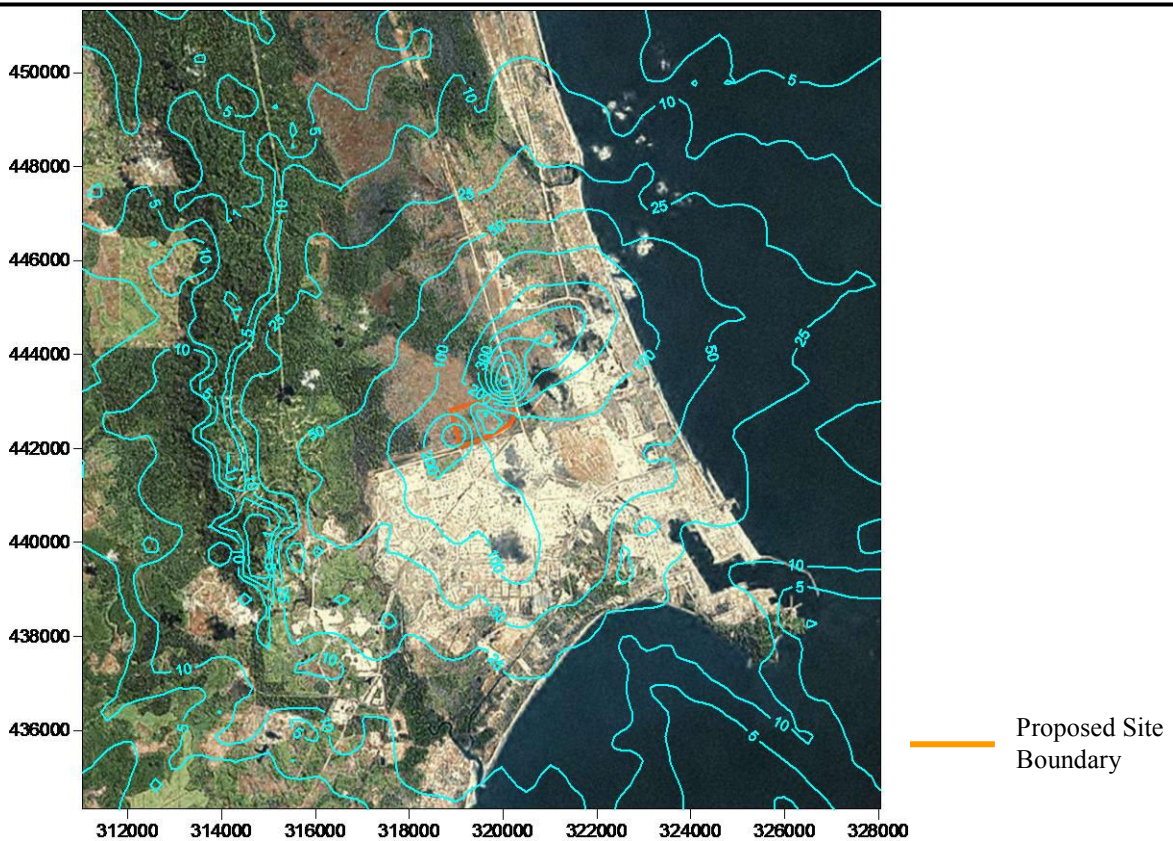


Exhibit 5.6.15: Frequency of 1-hour  $H_2SO_4$  AAQG Exceedence - Emergency Operations – 4 Scrubbers

**Lynas**  
MALAYSIA SDN. BHD.

ENVIRON